



# Core Facility Network

*A forum for FSU Core Facility Personnel*

# Overview

- ▶ Purpose of the Network
- ▶ Current plan
- ▶ Future ideas
- ▶ Contact
- ▶ Today's agenda
- ▶ Order of presentation

# Purpose

## Core Facility Network

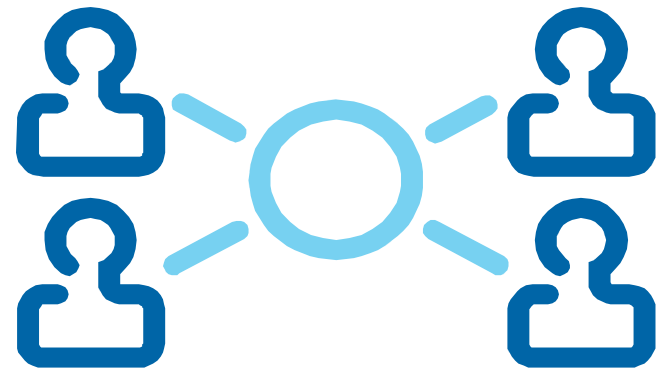
- ▶ Departments and units are physically apart
- ▶ Work is getting more specialized
- ▶ Hard to keep-up with advances due to
  - Equipment upgrades
  - Facility consolidation
  - Technical advances
- ▶ No unified forum exists for communication

# Plan

- ▶ Organize a meeting
- ▶ Create a network for Core Facility Personnel
- ▶ Increase our exposure
- ▶ Appreciation of our work
- ▶ Direct and indirect benefits
  - More clientele
  - Professional advancement

# Future

- ▶ Create a e-mail list-service
- ▶ Plan for next step
  - Meeting of core facility personnel only
  - Meeting with users
- ▶ Professional development
- ▶ List of equipment and its capabilities
- ▶ Any other ideas?



## Questions and contact:

[tsomasundaram@fsu.edu](mailto:tsomasundaram@fsu.edu) | 644-6448 or  
[cmundoma@fsu.edu](mailto:cmundoma@fsu.edu) | 644-5147

# Meeting Agenda

- »» Everyone gives a 5 min presentation with a 2 min Q+A

# Order of presentation

Firstname	Lastname	Core Facility	Start Time	End Time
Kate	Calvin	Translational Lab	11:35 AM	11:42 AM
Banghao	Chen	NMR Lab	11:42 AM	11:49 AM
Steinar	Dale	Adv Power System	11:49 AM	11:56 AM
Ruth	Didier	Cell Culture	11:56 AM	12:03 PM
Brian	Fairhurst	NHMFL	12:03 PM	12:10 PM
Thomas	Fellers	Bio Sci Img Resource	12:10 PM	12:17 PM
Dano	Fiore	Biology	12:17 PM	12:24 PM
Steven E	Frietag	NMR Lab	12:24 PM	12:31 PM
Umesh	Goli	Bass & Mass Spec Lab	12:31 PM	12:38 PM
Joan	Hare	Protein Expression	12:38 PM	12:45 PM
Roger	Mercer	Translational Lab	12:45 PM	12:52 PM
Steve	McClellan	CAPS	12:52 PM	12:59 PM

Firstname	Lastname	Core Facility	Start Time	End Time
Steve	Miller	DNA Sequencing	12:59 PM	1:06 PM
Claudius	Mundoma	Physical Biochem	1:06 PM	1:13 PM
Kristina	Poduch	Hybridoma	1:13 PM	1:20 PM
Cheryl	Pye	Molecular Cloning	1:20 PM	1:27 PM
Margaret	Seavy	Bioanalytical	1:27 PM	1:34 PM
Charlotte	Sjunneskog	Antartic Marine Bio	1:34 PM	1:41 PM
Thayumanasamy	Somasundaram	X-Ray Crystallography	1:41 PM	1:48 PM
Bert	van de Burgt	Laser lab	1:48 PM	1:55 PM
Brian	Washburn	Hybridoma	1:55 PM	2:02 PM
Jeffrey	Whalen	X-Ray	2:02 PM	2:09 PM
Michael	Zawrotny	Computer Resources	2:09 PM	2:16 PM