

# X-Ray Facility (XRF) Overview

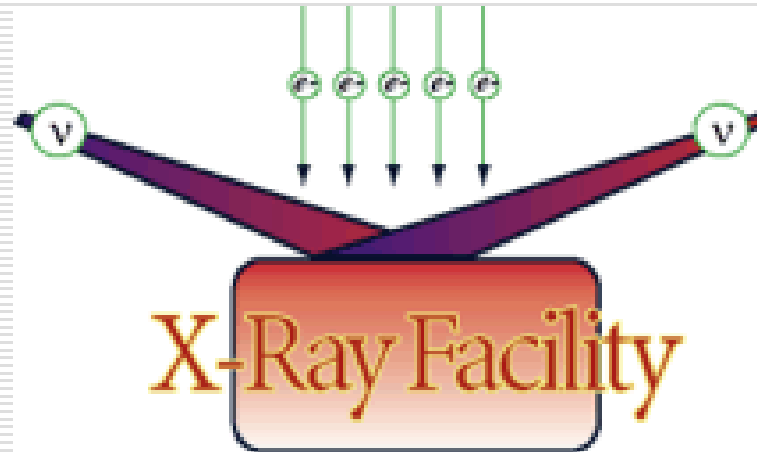
---

IMB X-Ray Facility

410-413 Kasha Laboratory

[www.sb.fsu.edu/~xray](http://www.sb.fsu.edu/~xray)

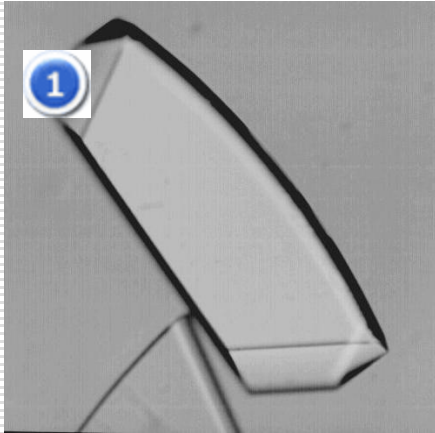
850-644-6448



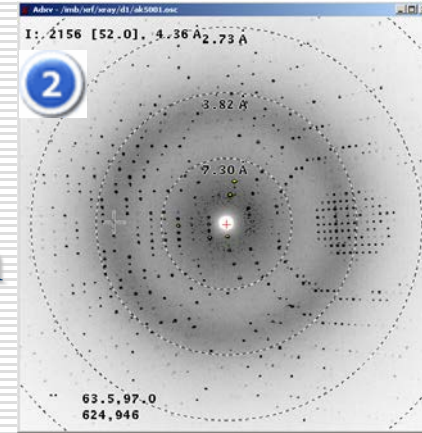
# What XRF Can Do For You?

Images courtesy of Michael Chapman Lab

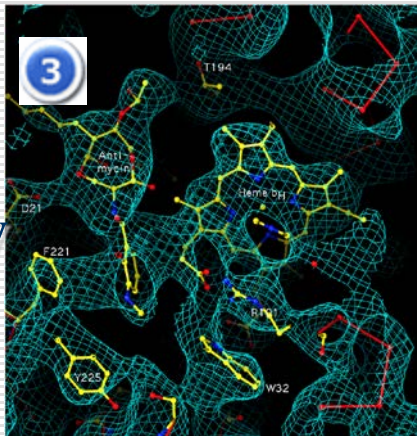
Crystal



Diffraction



E Density



Structure



XRF can help you in Steps



# X-Ray Hardware & Software

---

- Cu Rotating Anode
- *Rigaku RU-H2R*
- IP Detector
- *Rigaku R-Axis IIC*
- CCD Detector
- *Marccd165*
- Mirror | Cryo
- *Osmic / Oxford*
- Data Collection
- *Detector s/w*
- Data Processing
- *HKL Suite*
- Data Analysis
- *Several*
- Data Archiving
- *Several*

# X-ray Services

---

- ❑ Crystallization: RT | LT | VT
- ❑ Data: Collect | Process | Visualize
- ❑ Synchrotron: Prepare | Go | Send | Process
- ❑ Data: Store | Archive | Retrieve
- ❑ Crystals: Store | Prepare | Send

# X-Ray Accessories

Tools



Crystal Storage



Imaging



Data Storage



# XRF-Contact

---

Thayumanasamy “Soma” sundaram

414 Institute of Molecular Biophysics

Florida State University

Tallahassee, FL 32306-4380

Phone: 850-644-6448 | Fax: 850-644-7244

E-mail: [soma@sb.fsu.edu](mailto:soma@sb.fsu.edu)

Web: [www.sb.fsu.edu/~soma](http://www.sb.fsu.edu/~soma)